

***trans*-Diaquabis[5-carboxy-4-carboxylato-2-(4-pyridinio)-1*H*-imidazol-1-ido- $\kappa^2N^3,O^4$ ]zinc(II)**

Xia Li,<sup>a\*</sup> Ling-Zhi Du,<sup>a</sup> Ben-Lai Wu<sup>b</sup> and Hong-Yun Zhang<sup>b</sup>

<sup>a</sup>Department of Chemistry and Chemical Engineering, Henan University of Urban Construction, Pingdingshan, Henan 467044, People's Republic of China, and

<sup>b</sup>Department of Chemistry, Zhengzhou University, Zhengzhou, Henan 450052, People's Republic of China

Correspondence e-mail: lixia@hncj.edu.cn

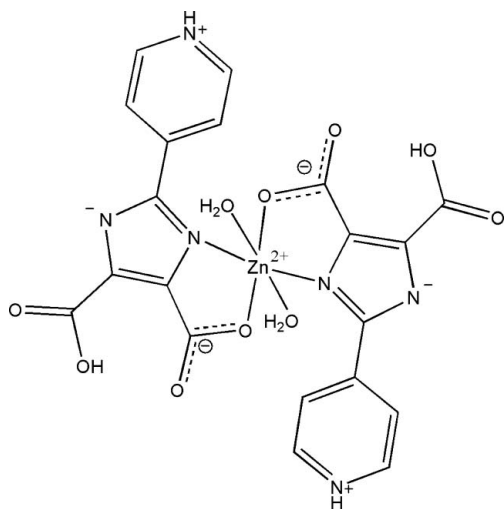
Received 5 August 2010; accepted 9 August 2010

Key indicators: single-crystal X-ray study; *T* = 173 K; mean  $\sigma(C-C)$  = 0.003 Å; *R* factor = 0.031; *wR* factor = 0.090; data-to-parameter ratio = 14.0.

In the title complex,  $[Zn(C_{10}H_6N_3O_4)_2(H_2O)_2]$ , the Zn<sup>II</sup> atom is located on a twofold rotation axis and is coordinated by two *trans*-positioned *N,O*-bidentate and zwitterionic 5-carboxy-4-carboxylato-2-(4-pyridinio)-1*H*-imidazol-1-ide ( $H_2PIDC^-$ ) ligands and two water molecules, defining a distorted octahedral environment. The complete solid-state structure can be described as a three-dimensional supramolecular framework, stabilized by extensive hydrogen-bonding interactions involving the coordinated water molecules, uncoordinated imidazole N atom, protonated pyridine N and carboxylate O atoms of the  $H_2PIDC^-$  ligands.

**Related literature**

For related structures, see: Li, Liu *et al.* (2009); Li, Wu *et al.* (2009). For the preparation of 2-(pyridin-4-yl)-1*H*-imidazole-4,5-dicarboxylic acid, see: Sun *et al.* (2006).



**Experimental**

*Crystal data*

$[Zn(C_{10}H_6N_3O_4)_2(H_2O)_2]$   
*M<sub>r</sub>* = 565.76  
 Monoclinic, *C2/c*  
*a* = 7.4138 (9) Å  
*b* = 20.204 (3) Å  
*c* = 13.4778 (17) Å  
 $\beta$  = 97.008 (1)°

*V* = 2003.7 (4) Å<sup>3</sup>  
*Z* = 4  
 Mo *K*α radiation  
 $\mu$  = 1.31 mm<sup>-1</sup>  
*T* = 173 K  
 0.27 × 0.17 × 0.10 mm

*Data collection*

Rigaku Mercury CCD diffractometer  
 Absorption correction: multi-scan (*CrystalClear*; Rigaku, 2000)  
*T<sub>min</sub>* = 0.754, *T<sub>max</sub>* = 0.878

9235 measured reflections  
 2488 independent reflections  
 1957 reflections with *I* > 2σ(*I*)  
*R<sub>int</sub>* = 0.031

*Refinement*

$R[F^2 > 2\sigma(F^2)]$  = 0.031  
 $wR(F^2)$  = 0.090  
*S* = 1.04  
 2488 reflections  
 178 parameters  
 1 restraint

H atoms treated by a mixture of independent and constrained refinement  
 $\Delta\rho_{max}$  = 0.34 e Å<sup>-3</sup>  
 $\Delta\rho_{min}$  = -0.37 e Å<sup>-3</sup>

**Table 1**

Selected bond lengths (Å).

Zn1—O2	2.0713 (15)	Zn1—N1	2.1592 (17)
Zn1—O1	2.1407 (18)		

**Table 2**

Hydrogen-bond geometry (Å, °).

<i>D</i> —H... <i>A</i>	<i>D</i> —H	H... <i>A</i>	<i>D</i> ... <i>A</i>	<i>D</i> —H... <i>A</i>
O1—H1B...N2 <sup>i</sup>	0.82 (3)	2.08 (3)	2.898 (3)	178 (3)
N3—H3...O5 <sup>ii</sup>	0.88	1.89	2.755 (2)	169
O4—H4A...O3	0.89 (2)	1.58 (2)	2.459 (2)	173 (3)

Symmetry codes: (i)  $-x - \frac{1}{2}, -y + \frac{1}{2}, -z + 1$ ; (ii)  $-x - \frac{1}{2}, y - \frac{1}{2}, -z + \frac{3}{2}$ .

Data collection: *CrystalClear* (Rigaku, 2000); cell refinement: *CrystalClear*; data reduction: *CrystalClear*; program(s) used to solve structure: *SHELXS97* (Sheldrick, 2008); program(s) used to refine structure: *SHELXL97* (Sheldrick, 2008); molecular graphics: *SHELXTL* (Sheldrick, 2008); software used to prepare material for publication: *SHELXTL*.

This work was supported by the National Natural Science Foundation of China (20771094, 20671083), the Science and Technology Key Task of Henan Province (0524270061) and the China Postdoctoral Science Foundation (20070410877).

Supplementary data and figures for this paper are available from the IUCr electronic archives (Reference: JH2196).

## References

- Li, X., Liu, W., Wu, B.-L. & Zhang, H.-Y. (2009). *Acta Cryst.* **E65**, m820–m821.
- Li, X., Wu, B. L., Niu, C. Y., Niu, Y. Y. & Zhang, H. Y. (2009). *Cryst. Growth Des.* **9**, 3423–3431.
- Rigaku (2000). *CrystalClear*. Rigaku Corporation, Tokyo, Japan.
- Sheldrick, G. M. (2008). *Acta Cryst.* **A64**, 112–122.
- Sun, T., Ma, J.-P., Huang, R.-Q. & Dong, Y.-B. (2006). *Acta Cryst.* **E62**, o2751–o2752.

**supplementary materials**

*Acta Cryst.* (2010). E66, m1178-m1179 [ doi:10.1107/S1600536810031855 ]

***trans*-Diaquabis[5-carboxy-4-carboxylato-2-(4-pyridinio)-1*H*-imidazol-1-ido- $\kappa^2N^3,O^4$ ]zinc(II)**

**X. Li, L.-Z. Du, B.-L. Wu and H.-Y. Zhang**

**Comment**

Multifunctional connector 2-(pyridin-4-yl)-1*H*-imidazole-4,5-dicarboxylate acid (H<sub>3</sub>PIDC), a rigid N-heterocyclic carboxylate, has great potential for coordinative interactions and hydrogen bonding, showing more interesting traits in the construction of MOFs. It can be successively deprotonated to generate various species with different proton numbers, and hence may result in a large diversity of supramolecular architectures. Very recently, we have reported several supramolecular architectures (Li, Wu *et al.*, 2009; Li, Liu *et al.*, 2009) base on ligand 2-(pyridin-4-yl)-1*H*-imidazole-4,5-dicarboxylic acid. As an extension of our previous investigations, we have isolated a new Zn(II) complex, [Zn(H<sub>2</sub>PIDC)<sub>2</sub>(H<sub>2</sub>O)<sub>2</sub>], (I), by the reaction of H<sub>3</sub>PIDC and Zn(II) diacetate under the hydrothermal condition. We report here the single-crystal structure of this complex.

As shown in Fig. 1, the molecule of (I) is a discrete neutral monomer, in which the Zn atom resides on a crystallographic inversion centre and the asymmetric unit contains one-half of the [Zn(H<sub>2</sub>PIDC)<sub>2</sub>(H<sub>2</sub>O)<sub>2</sub>] formula unit. Each Zn atom is six-coordinated by N<sub>2</sub>O<sub>4</sub> with two chelating rings from two H<sub>2</sub>PIDC ligands arranged symmetrically in the equatorial plane and two water molecules occupying the apical sites, showing a distorted octahedral geometry (Table 1). In this complex, one carboxyl group and imidazole group are deprotonated and the pyridyl group is protonated, and the ligand bears a formal charge of -1, and the uncoordinated carboxylate atoms O3 and O4 form an intramolecular hydrogen bond (Table 2). All non-H atoms in the imidazole-4,5-dicarboxyl group are nearly coplanar [the mean deviation is 0.075 (3) Å], and the dihedral angle between imidazole group and pyridine group is 11.4 (2) °.

A three-dimensional supramolecular network is constructed *via* hydrogen-bonding interactions involving the coordinated water molecules, uncoordinated imidazole N atom, protonated pyridine N and carboxylate O atoms of the H<sub>2</sub>PIDC<sup>-</sup> ligands (Table 2 and Fig. 2).

**Experimental**

A mixture of zinc diacetate dihydrate (0.022 g, 0.1 mmol), 2-(pyridin-4-yl)-1*H*-imidazole-4,5-dicarboxylic acid (0.024 g, 0.1 mmol) (Sun *et al.*, 2006), NaOH (0.004 g, 0.1 mmol) and water (10 ml) was sealed into a Teflon-lined stainless autoclave and heated at 413 K for 3 days, then cooled to room temperature gradually and colourless block crystals of (I) were obtained. Analysis calculated for C<sub>20</sub>H<sub>16</sub>ZnN<sub>6</sub>O<sub>10</sub>: C 42.46, H 2.85, N 14.85; found: C 42.82, H 2.73, N 14.70.

**Refinement**

H atoms attached to N and O atoms were located in a difference Fourier maps and refined as riding in their as-found relative positions, with  $U_{\text{iso}}(\text{H}) = 1.5U_{\text{eq}}(\text{O}, \text{N})$ . Other H atoms were positioned geometrically with C—H = 0.95 Å and constrained to ride on their parent atoms with  $U_{\text{iso}}(\text{H}) = 1.2U_{\text{eq}}(\text{C})$ .

## Figures

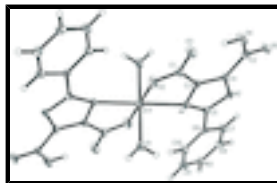


Fig. 1. A view of the molecular of (I), showing the atom-labelling scheme and displacement ellipsoids at the 30% probability level.

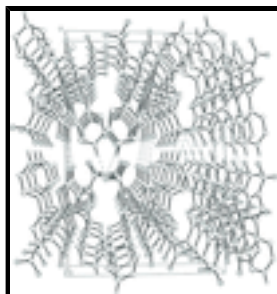


Fig. 2. The crystal packing of (I), showing the three-dimensional hydrogen-bonding network, H atoms have been omitted for clarity.

## *trans*-Diaquabis[5-carboxy-4-carboxylato-2-(4-pyridinio)-1*H*-imidazol-1-ido- $\kappa^2N^3,O^4$ ]zinc(II)

### Crystal data

[Zn(C<sub>10</sub>H<sub>6</sub>N<sub>3</sub>O<sub>4</sub>)<sub>2</sub>(H<sub>2</sub>O)<sub>2</sub>]

$M_r = 565.76$

Monoclinic, *C2/c*

$a = 7.4138$  (9) Å

$b = 20.204$  (3) Å

$c = 13.4778$  (17) Å

$\beta = 97.008$  (1)°

$V = 2003.7$  (4) Å<sup>3</sup>

$Z = 4$

$F(000) = 1152$

$D_x = 1.875$  Mg m<sup>-3</sup>

Mo  $K\alpha$  radiation,  $\lambda = 0.71073$  Å

$\theta = 2.5$ – $28.3$ °

$\mu = 1.31$  mm<sup>-1</sup>

$T = 173$  K

Block, colorless

$0.27 \times 0.17 \times 0.10$  mm

### Data collection

Rigaku Mercury CCD  
diffractometer

Radiation source: fine-focus sealed tube

graphite

$\omega$  scan

Absorption correction: multi-scan  
(*CrystalClear*; Rigaku, 2000)

$T_{\min} = 0.754$ ,  $T_{\max} = 0.878$

9235 measured reflections

2488 independent reflections

1957 reflections with  $I > 2\sigma(I)$

$R_{\text{int}} = 0.031$

$\theta_{\text{max}} = 28.3$ °,  $\theta_{\text{min}} = 2.5$ °

$h = -9 \rightarrow 9$

$k = -26 \rightarrow 26$

$l = -17 \rightarrow 17$

### Refinement

Refinement on  $F^2$

Primary atom site location: structure-invariant direct  
methods

Least-squares matrix: full

$$R[F^2 > 2\sigma(F^2)] = 0.031$$

$$wR(F^2) = 0.090$$

$$S = 1.04$$

2488 reflections

178 parameters

1 restraint

Secondary atom site location: difference Fourier map

Hydrogen site location: inferred from neighbouring sites

H atoms treated by a mixture of independent and constrained refinement

$$w = 1/[\sigma^2(F_o^2) + (0.0453P)^2 + 2.1588P]$$

$$\text{where } P = (F_o^2 + 2F_c^2)/3$$

$$(\Delta/\sigma)_{\max} < 0.001$$

$$\Delta\rho_{\max} = 0.34 \text{ e } \text{\AA}^{-3}$$

$$\Delta\rho_{\min} = -0.37 \text{ e } \text{\AA}^{-3}$$

### Special details

**Geometry.** All e.s.d.'s (except the e.s.d. in the dihedral angle between two l.s. planes) are estimated using the full covariance matrix. The cell e.s.d.'s are taken into account individually in the estimation of e.s.d.'s in distances, angles and torsion angles; correlations between e.s.d.'s in cell parameters are only used when they are defined by crystal symmetry. An approximate (isotropic) treatment of cell e.s.d.'s is used for estimating e.s.d.'s involving l.s. planes.

**Refinement.** Refinement of  $F^2$  against ALL reflections. The weighted  $R$ -factor  $wR$  and goodness of fit  $S$  are based on  $F^2$ , conventional  $R$ -factors  $R$  are based on  $F$ , with  $F$  set to zero for negative  $F^2$ . The threshold expression of  $F^2 > \sigma(F^2)$  is used only for calculating  $R$ -factors(gt) *etc.* and is not relevant to the choice of reflections for refinement.  $R$ -factors based on  $F^2$  are statistically about twice as large as those based on  $F$ , and  $R$ -factors based on ALL data will be even larger.

### Fractional atomic coordinates and isotropic or equivalent isotropic displacement parameters ( $\text{\AA}^2$ )

	<i>x</i>	<i>y</i>	<i>z</i>	$U_{\text{iso}}^*/U_{\text{eq}}$
Zn1	0.2500	0.2500	0.5000	0.02158 (12)
O1	0.1031 (3)	0.21527 (11)	0.36331 (14)	0.0405 (5)
N1	-0.0003 (2)	0.26283 (8)	0.56460 (13)	0.0181 (3)
C1	0.0872 (3)	0.37351 (10)	0.51444 (16)	0.0230 (4)
O2	0.1956 (2)	0.34788 (7)	0.46161 (13)	0.0296 (4)
N2	-0.2095 (2)	0.28420 (8)	0.67035 (13)	0.0204 (4)
C2	-0.2007 (3)	0.40644 (10)	0.68011 (17)	0.0239 (4)
O3	0.0612 (2)	0.43586 (7)	0.51721 (13)	0.0355 (4)
N3	-0.2067 (3)	0.03644 (9)	0.68078 (15)	0.0283 (4)
H3	-0.2203	-0.0056	0.6953	0.034*
C3	-0.0184 (3)	0.32960 (9)	0.57348 (15)	0.0184 (4)
O4	-0.1528 (3)	0.46001 (7)	0.63823 (14)	0.0368 (4)
C4	-0.1451 (3)	0.34251 (9)	0.63948 (15)	0.0192 (4)
O5	-0.2869 (2)	0.40756 (8)	0.75300 (12)	0.0322 (4)
C5	-0.1194 (3)	0.23786 (9)	0.62332 (15)	0.0184 (4)
C6	-0.1542 (3)	0.16745 (9)	0.63892 (15)	0.0180 (4)
C7	-0.2469 (3)	0.14843 (10)	0.71861 (17)	0.0250 (5)
H7	-0.2949	0.1811	0.7587	0.030*
C8	-0.2687 (3)	0.08256 (11)	0.73901 (17)	0.0278 (5)
H8	-0.3279	0.0698	0.7946	0.033*
C9	-0.1247 (3)	0.05237 (11)	0.60116 (18)	0.0311 (5)
H9	-0.0866	0.0184	0.5597	0.037*

## supplementary materials

---

C10	-0.0947 (3)	0.11772 (10)	0.57857 (17)	0.0251 (5)
H10	-0.0343	0.1288	0.5226	0.030*
H1B	-0.008 (4)	0.2148 (13)	0.353 (2)	0.030*
H1A	0.135 (4)	0.1903 (13)	0.324 (2)	0.030*
H4A	-0.080 (3)	0.4538 (12)	0.5916 (16)	0.030*

### Atomic displacement parameters ( $\text{\AA}^2$ )

	$U^{11}$	$U^{22}$	$U^{33}$	$U^{12}$	$U^{13}$	$U^{23}$
Zn1	0.0248 (2)	0.01734 (18)	0.0245 (2)	0.00358 (13)	0.01053 (13)	0.00102 (13)
O1	0.0245 (9)	0.0669 (14)	0.0305 (10)	0.0044 (9)	0.0054 (8)	-0.0200 (9)
N1	0.0208 (8)	0.0139 (8)	0.0206 (8)	0.0008 (6)	0.0066 (7)	0.0011 (6)
C1	0.0266 (11)	0.0175 (10)	0.0261 (11)	0.0015 (8)	0.0088 (9)	0.0026 (8)
O2	0.0361 (9)	0.0201 (7)	0.0366 (9)	0.0046 (7)	0.0203 (7)	0.0067 (7)
N2	0.0216 (9)	0.0161 (8)	0.0250 (9)	-0.0002 (7)	0.0085 (7)	-0.0004 (7)
C2	0.0263 (11)	0.0184 (10)	0.0280 (11)	0.0016 (8)	0.0077 (9)	-0.0012 (8)
O3	0.0493 (11)	0.0144 (7)	0.0482 (11)	0.0022 (7)	0.0275 (9)	0.0071 (7)
N3	0.0356 (11)	0.0140 (8)	0.0359 (11)	-0.0042 (7)	0.0074 (8)	0.0035 (7)
C3	0.0209 (10)	0.0140 (9)	0.0212 (10)	0.0006 (7)	0.0063 (8)	0.0004 (7)
O4	0.0576 (12)	0.0155 (7)	0.0430 (10)	0.0036 (7)	0.0291 (9)	-0.0001 (7)
C4	0.0222 (10)	0.0144 (9)	0.0220 (10)	0.0007 (7)	0.0062 (8)	0.0013 (7)
O5	0.0417 (10)	0.0220 (8)	0.0370 (9)	0.0018 (7)	0.0215 (8)	-0.0053 (7)
C5	0.0204 (10)	0.0153 (9)	0.0199 (10)	-0.0008 (7)	0.0045 (8)	0.0015 (7)
C6	0.0186 (10)	0.0145 (9)	0.0213 (10)	-0.0013 (7)	0.0034 (8)	0.0016 (7)
C7	0.0309 (12)	0.0183 (10)	0.0275 (11)	-0.0017 (8)	0.0101 (9)	-0.0008 (8)
C8	0.0324 (12)	0.0239 (11)	0.0287 (12)	-0.0055 (9)	0.0109 (10)	0.0054 (9)
C9	0.0411 (14)	0.0190 (10)	0.0353 (13)	-0.0016 (9)	0.0137 (10)	-0.0037 (9)
C10	0.0312 (12)	0.0195 (10)	0.0266 (11)	-0.0023 (8)	0.0115 (9)	-0.0011 (8)

### Geometric parameters ( $\text{\AA}$ , $^\circ$ )

Zn1—O2	2.0713 (15)	C2—O4	1.290 (3)
Zn1—O2 <sup>i</sup>	2.0713 (15)	C2—C4	1.481 (3)
Zn1—O1	2.1407 (18)	N3—C9	1.336 (3)
Zn1—O1 <sup>i</sup>	2.1407 (18)	N3—C8	1.335 (3)
Zn1—N1 <sup>i</sup>	2.1592 (17)	N3—H3	0.8800
Zn1—N1	2.1592 (17)	C3—C4	1.395 (3)
O1—H1B	0.82 (3)	O4—H4A	0.885 (16)
O1—H1A	0.78 (3)	C5—C6	1.466 (2)
N1—C5	1.353 (3)	C6—C7	1.398 (3)
N1—C3	1.362 (2)	C6—C10	1.397 (3)
C1—O2	1.249 (3)	C7—C8	1.372 (3)
C1—O3	1.276 (2)	C7—H7	0.9500
C1—C3	1.478 (3)	C8—H8	0.9500
N2—C5	1.352 (3)	C9—C10	1.379 (3)
N2—C4	1.355 (2)	C9—H9	0.9500
C2—O5	1.236 (3)	C10—H10	0.9500
O2—Zn1—O2 <sup>i</sup>	180.0	C9—N3—C8	121.80 (19)

O2—Zn1—O1	92.00 (8)	C9—N3—H3	119.1
O2 <sup>i</sup> —Zn1—O1	88.00 (8)	C8—N3—H3	119.1
O2—Zn1—O1 <sup>i</sup>	88.00 (8)	N1—C3—C4	108.82 (17)
O2 <sup>i</sup> —Zn1—O1 <sup>i</sup>	92.00 (8)	N1—C3—C1	118.85 (17)
O1—Zn1—O1 <sup>i</sup>	180.0	C4—C3—C1	132.32 (18)
O2—Zn1—N1 <sup>i</sup>	99.47 (6)	C2—O4—H4A	114.6 (16)
O2 <sup>i</sup> —Zn1—N1 <sup>i</sup>	80.53 (6)	N2—C4—C3	108.85 (17)
O1—Zn1—N1 <sup>i</sup>	89.17 (7)	N2—C4—C2	121.34 (18)
O1 <sup>i</sup> —Zn1—N1 <sup>i</sup>	90.83 (7)	C3—C4—C2	129.67 (18)
O2—Zn1—N1	80.53 (6)	N1—C5—N2	114.27 (17)
O2 <sup>i</sup> —Zn1—N1	99.47 (6)	N1—C5—C6	125.79 (18)
O1—Zn1—N1	90.83 (7)	N2—C5—C6	119.94 (18)
O1 <sup>i</sup> —Zn1—N1	89.17 (7)	C7—C6—C10	117.99 (18)
N1 <sup>i</sup> —Zn1—N1	180.0	C7—C6—C5	119.26 (18)
Zn1—O1—H1B	123.2 (19)	C10—C6—C5	122.73 (18)
Zn1—O1—H1A	129 (2)	C8—C7—C6	120.1 (2)
H1B—O1—H1A	105 (3)	C8—C7—H7	120.0
C5—N1—C3	103.85 (16)	C6—C7—H7	120.0
C5—N1—Zn1	147.69 (13)	N3—C8—C7	120.1 (2)
C3—N1—Zn1	104.67 (12)	N3—C8—H8	119.9
O2—C1—O3	122.40 (19)	C7—C8—H8	119.9
O2—C1—C3	118.55 (18)	N3—C9—C10	120.6 (2)
O3—C1—C3	119.02 (18)	N3—C9—H9	119.7
C1—O2—Zn1	111.87 (13)	C10—C9—H9	119.7
C5—N2—C4	104.20 (17)	C9—C10—C6	119.3 (2)
O5—C2—O4	121.93 (19)	C9—C10—H10	120.4
O5—C2—C4	120.28 (19)	C6—C10—H10	120.4
O4—C2—C4	117.77 (19)		
O2—Zn1—N1—C5	-170.7 (3)	N1—C3—C4—N2	-1.3 (2)
O2 <sup>i</sup> —Zn1—N1—C5	9.3 (3)	C1—C3—C4—N2	177.0 (2)
O1—Zn1—N1—C5	97.4 (3)	N1—C3—C4—C2	174.4 (2)
O1 <sup>i</sup> —Zn1—N1—C5	-82.6 (3)	C1—C3—C4—C2	-7.3 (4)
N1 <sup>i</sup> —Zn1—N1—C5	37 (16)	O5—C2—C4—N2	10.2 (3)
O2—Zn1—N1—C3	-19.40 (13)	O4—C2—C4—N2	-171.3 (2)
O2 <sup>i</sup> —Zn1—N1—C3	160.60 (13)	O5—C2—C4—C3	-165.1 (2)
O1—Zn1—N1—C3	-111.28 (14)	O4—C2—C4—C3	13.5 (4)
O1 <sup>i</sup> —Zn1—N1—C3	68.72 (14)	C3—N1—C5—N2	-1.2 (2)
N1 <sup>i</sup> —Zn1—N1—C3	-171 (100)	Zn1—N1—C5—N2	150.2 (2)
O3—C1—O2—Zn1	166.35 (18)	C3—N1—C5—C6	179.3 (2)
C3—C1—O2—Zn1	-15.4 (3)	Zn1—N1—C5—C6	-29.3 (4)
O2 <sup>i</sup> —Zn1—O2—C1	24 (100)	C4—N2—C5—N1	0.4 (2)
O1—Zn1—O2—C1	110.06 (17)	C4—N2—C5—C6	179.97 (19)
O1 <sup>i</sup> —Zn1—O2—C1	-69.94 (17)	N1—C5—C6—C7	164.9 (2)
N1 <sup>i</sup> —Zn1—O2—C1	-160.45 (16)	N2—C5—C6—C7	-14.7 (3)
N1—Zn1—O2—C1	19.55 (16)	N1—C5—C6—C10	-13.6 (3)



## supplementary materials

---

C5—N1—C3—C4	1.5 (2)	N2—C5—C6—C10	166.9 (2)
Zn1—N1—C3—C4	-163.20 (14)	C10—C6—C7—C8	3.5 (3)
C5—N1—C3—C1	-177.10 (19)	C5—C6—C7—C8	-175.1 (2)
Zn1—N1—C3—C1	18.2 (2)	C9—N3—C8—C7	-0.8 (4)
O2—C1—C3—N1	-3.1 (3)	C6—C7—C8—N3	-2.2 (3)
O3—C1—C3—N1	175.2 (2)	C8—N3—C9—C10	2.6 (4)
O2—C1—C3—C4	178.8 (2)	N3—C9—C10—C6	-1.2 (4)
O3—C1—C3—C4	-3.0 (4)	C7—C6—C10—C9	-1.8 (3)
C5—N2—C4—C3	0.6 (2)	C5—C6—C10—C9	176.7 (2)
C5—N2—C4—C2	-175.55 (19)		

Symmetry codes: (i)  $-x+1/2, -y+1/2, -z+1$ .

### Hydrogen-bond geometry ( $\text{\AA}, ^\circ$ )

$D-H\cdots A$	$D-H$	$H\cdots A$	$D\cdots A$	$D-H\cdots A$
O1—H1B $\cdots$ N2 <sup>ii</sup>	0.82 (3)	2.08 (3)	2.898 (3)	178 (3)
N3—H3 $\cdots$ O5 <sup>iii</sup>	0.88	1.89	2.755 (2)	169.
O4—H4A $\cdots$ O3	0.89 (2)	1.58 (2)	2.459 (2)	173 (3)

Symmetry codes: (ii)  $-x-1/2, -y+1/2, -z+1$ ; (iii)  $-x-1/2, y-1/2, -z+3/2$ .

Fig. 1

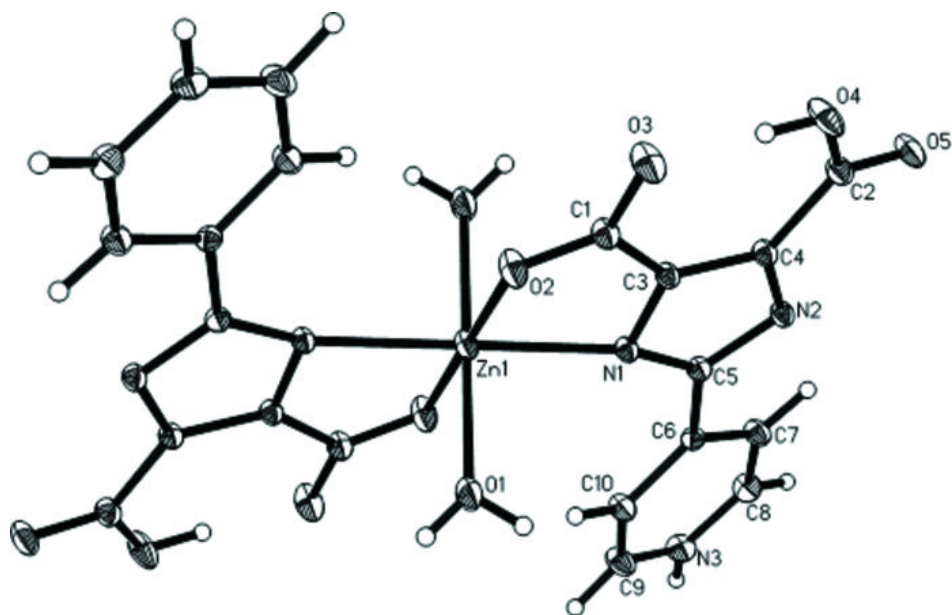


Fig. 2

